

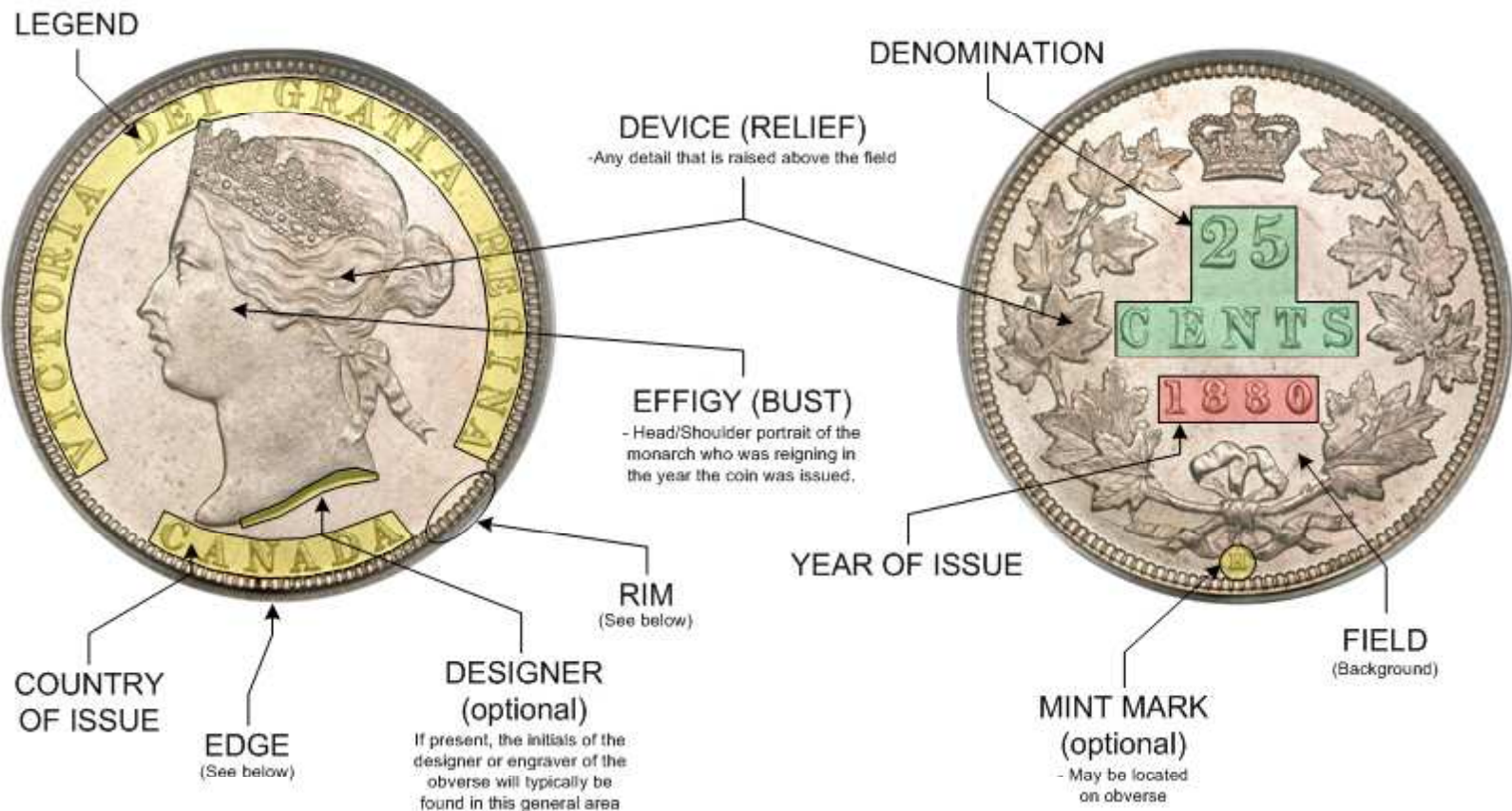
# THE ANATOMY OF A CANADIAN COIN

## OBVERSE (“Heads” Side)

(“Heads” Side)

## REVERSE (“Tails” Side)

(“Tails” Side)



## RIM STYLES:

DENTICLES



DOTS



## EDGE STYLES:

Reeded Edge



Plain Edge



Reeded Edge with Lettering

